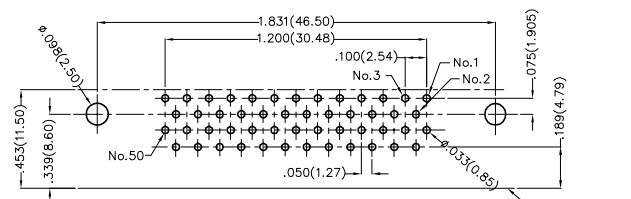
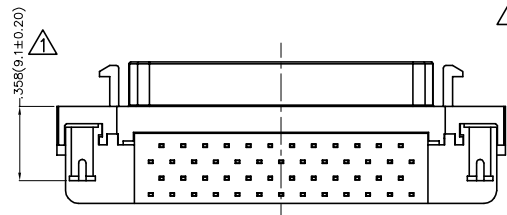
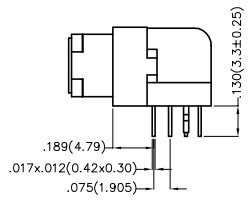
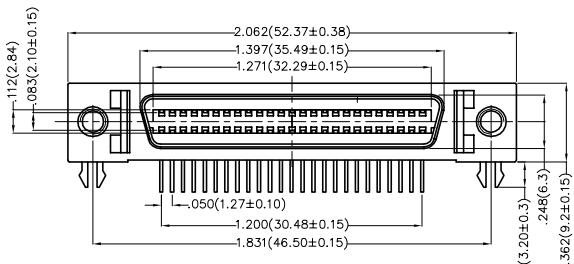
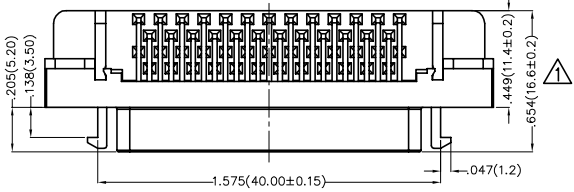


REV	LOCATIONS	DESCRIPTION	DATE	REVISER	APPD
1	△	Update dimensions and tolerances	15/JUL/24	MATT	LEO

SPECIFICATIONS

Electrical  
 Current Rating: 1A AC(rms)/DC  
 Voltage Rating: 250V AC(rms)/DC  
 Contact Resistance: 30 mΩ Max  
 Insulation Resistance: 500 MΩ Min  
 Withstanding Voltage: 500V AC r.m.s  
 Temperature Range—Operating: -40°C~+105°C

Material and Plating  
 Housing: PBT (UL 94V-0)  
 Contact: Phosphor Bronze  
 Contact plating: Selective gold in contact area, tin on tail  
 Shell: Zinc Alloy



Recommended P.C.Board Layout  
 General Tolerances: ±0.05mm

Ordering Information

FCS 50 01 — F0 D B 3 XX K6 K A  
 1 2 3 4 5 6 7 8 9 10 11

1	Category FCS-SCSI	2	Circuits 50	3	Distinction No. 01	4	Type F0-Female	5	Assembly Layout D-DIP	6	Entry Angle B-90° Angle
7	Plating 3-Selective gold in contact area, tin on tail		8	Thickness of Plating 00-Gold flash 03-3μ" Custom plate available		9	Color-Resin K6-Black	10	Packaging K-Tray	11	Distinction Type A-Type A

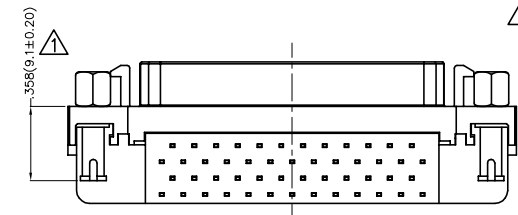
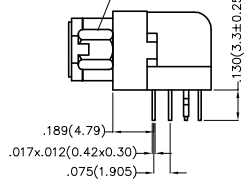
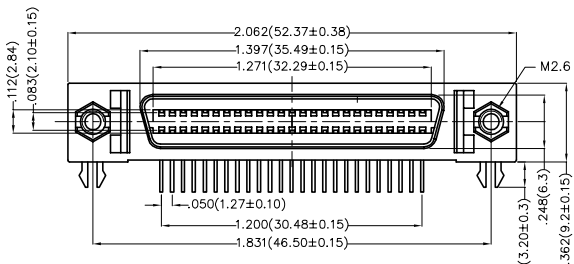
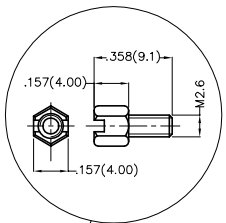
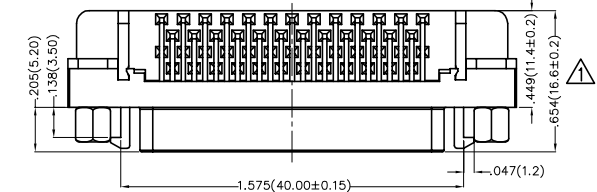
<p>THIRD ANGLE PROJECTION</p>	GENERAL TOLERANCES (UNLESS SPECIFIED)		APPROVE BY FRANK	DATE 19/JUL/13	PART NO. FCS5001-F0DB3XXK6KA	ITEM NO. FCS5001	<p>Building Technology Cornerstone</p>
	X.±.012(0.30)	X'.±5'	CHECKED BY CHERRY	DATE 19/JUL/13	TITLE SCSI Connector Pitch 1.27mm 90° Angle Female		
DESIGN UNITS Inch (metric)	X.XX±.008(0.20)	.X'±2'	DRAWN BY KEVIN	DATE 19/JUL/13	THIS DRAWING CONTAINS INFORMATION THAT IS PROPRIETARY TO TXGA INDUSTRIAL ELECTRONICS(S.Z)CO.,LTD AND SHOULD NOT BE USED WITHOUT WRITTEN PERMISSION		
SCALE 5:1	SIZE A4	X.XX±.006(0.15)					
		X.XXX±.004(0.10)					

REV	LOCATIONS	DESCRIPTION	DATE	REVISER	APPD
1	△	Update dimensions and tolerances	15/JUL/24	MATT	LEO

SPECIFICATIONS

Electrical  
 Current Rating: 1A AC(rms)/DC  
 Voltage Rating: 250V AC(rms)/DC  
 Contact Resistance: 30 mΩ Max  
 Insulation Resistance: 500 MΩ Min  
 Withstanding Voltage: 500V AC r.m.s  
 Temperature Range—Operating: -40°C~+105°C

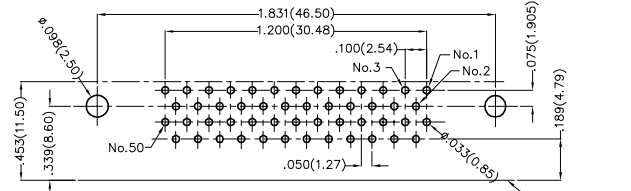
Material and Plating  
 Housing: PBT (UL 94V-0)  
 Contact: Phosphor Bronze  
 Contact plating: Selective gold in contact area, tin on tail  
 Shell: Zinc Alloy



Ordering Information

FCS 50 01 — F0 D B 3 XX K6 K B  
 1 2 3 4 5 6 7 8 9 10 11

1	Category FCS-SCSI	2	Circuits 50	3	Distinction No. 01	4	Type F0-Female	5	Assembly Layout D-DIP	6	Entry Angle B-90° Angle
7	Plating 3-Selective gold in contact area, tin on tail	8	Thickness of Plating 00-Gold flash 03-3μ" Custom plate available	9	Color-Resin K6-Black	10	Packaging K-Tray	11	Distinction Type B-Type B		



Recommended P.C. Board Layout  
 General Tolerances: ±0.05mm

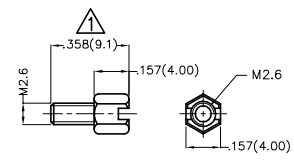
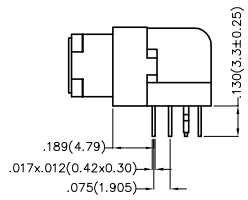
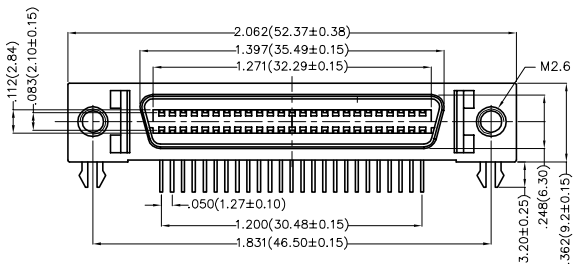
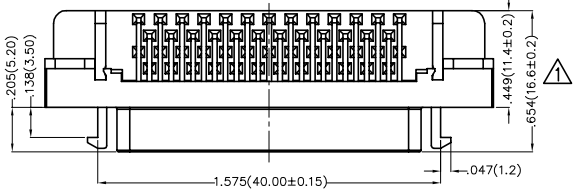
THIRD ANGLE PROJECTION		GENERAL TOLERANCES (UNLESS SPECIFIED)		APPROVE BY	DATE	PART NO.	ITEM NO.	
		X.±0.12(0.30)	X'±5'	FRANK	19/JUL/13	FCS5001-F0DB3XXK6KB	FCS5001	
DESIGN UNITS Inch (metric)		X.X±.008(0.20)	.X'±2'	CHECKED BY	DATE	TITLE		Building Technology Cornerstone REV 1 SHEET NO. 1/1
SCALE 5:1 SIZE A4		X.XX±.006(0.15)	.XX±1'	CHERRY	19/JUL/13	SCSI Connector Pitch 1.27mm 90° Angle Female		
		X.XXX±.004(0.10)	.XX±0.5'	DRAWN BY	DATE	THIS DRAWING CONTAINS INFORMATION THAT IS PROPRIETARY TO TXGA INDUSTRIAL ELECTRONICS(S.Z)CO.,LTD AND SHOULD NOT BE USED WITHOUT WRITTEN PERMISSION		
				KEVIN	19/JUL/13			

REV	LOCATIONS	DESCRIPTION	DATE	REVISER	APPD
1	△	Update dimensions and tolerances	15/JUL/24	MATT	LEO

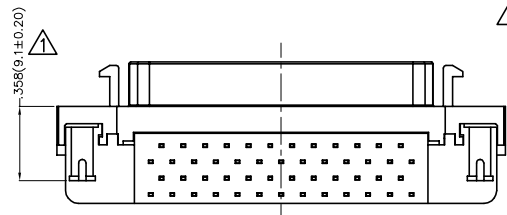
SPECIFICATIONS

Electrical  
 Current Rating: 1A AC(rms)/DC  
 Voltage Rating: 250V AC(rms)/DC  
 Contact Resistance: 30 mΩ Max  
 Insulation Resistance: 500 MΩ Min  
 Withstanding Voltage: 500V AC r.m.s  
 Temperature Range—Operating: -40°C~+105°C

Material and Plating  
 Housing: PBT (UL 94V-0)  
 Contact: Phosphor Bronze  
 Contact plating: Selective gold in contact area, tin on tail  
 Shell: Zinc Alloy



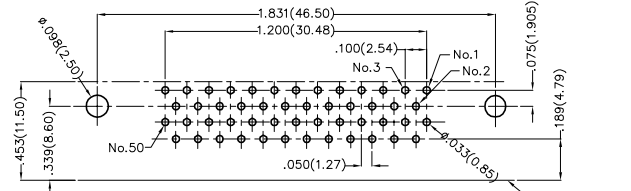
Screw (2pcs)



Ordering Information

FCS 50 01 — F0 D B 3 XX K6 K C  
 1 2 3 4 5 6 7 8 9 10 11

1	Category FCS-SCSI	2	Circuits 50	3	Distinction No. 01	4	Type F0-Female	5	Assembly Layout D-DIP	6	Entry Angle B-90° Angle
7	Plating 3-Selective gold in contact area, tin on tail		8	Thickness of Plating 00-Gold flash 03-3μ" Custom plate available		9	Color-Resin K6-Black	10	Packaging K-Tray	11	Distinction Type C-Type C



Recommended P.C.Board Layout  
 General Tolerances: ±0.05mm

THIRD ANGLE PROJECTION	GENERAL TOLERANCES (UNLESS SPECIFIED)		APPROVE BY FRANK	DATE 19/JUL/13	PART NO. FCS5001-F0DB3XXK6KC	ITEM NO. FCS5001	
	DESIGN UNITS Inch (metric)	X.±.012(0.30) X.X±.008(0.20) X.XX±.006(0.15) X.XXX±.004(0.10)	X'±5' .X'±2' .XX±1' .XXX±0.5'	CHECKED BY CHERRY	DATE 19/JUL/13	TITLE SCSI Connector Pitch 1.27mm 90° Angle Female	
SCALE 5:1	SIZE A4	DRAWN BY KEVIN		DATE 19/JUL/13	THIS DRAWING CONTAINS INFORMATION THAT IS PROPRIETARY TO TXGA INDUSTRIAL ELECTRONICS(S.Z)CO.,LTD AND SHOULD NOT BE USED WITHOUT WRITTEN PERMISSION		